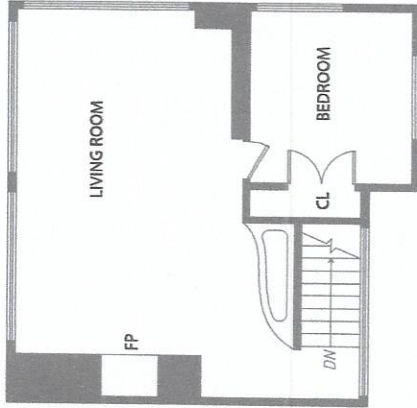
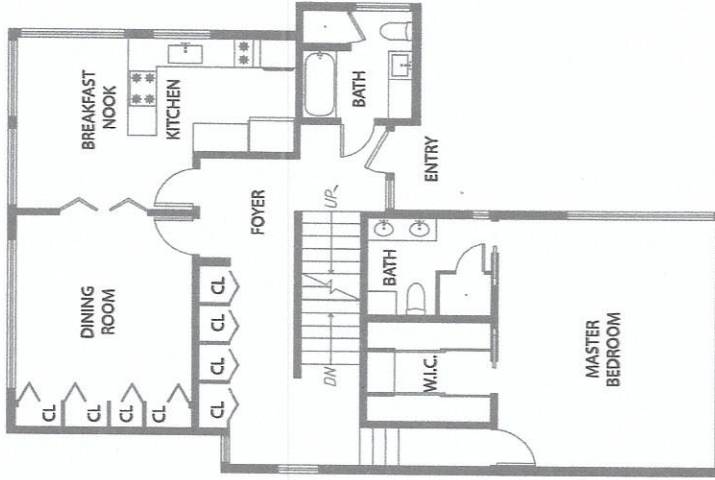


170 PALO ALTO AVENUE

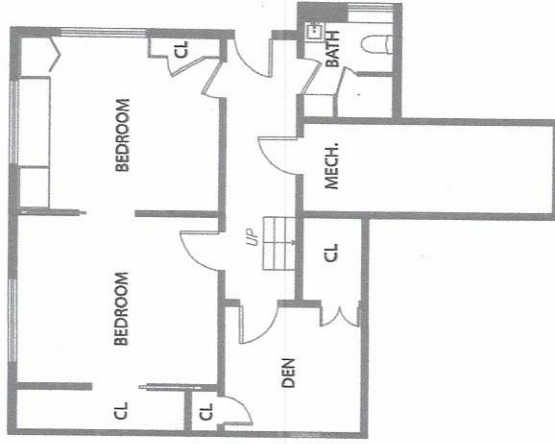
SAN FRANCISCO, CALIFORNIA



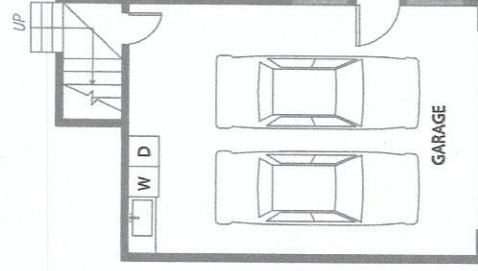
UPPER LEVEL



MAIN LEVEL



LOWER LEVEL



GARAGE LEVEL

PROPERTY SQF INFORMATION

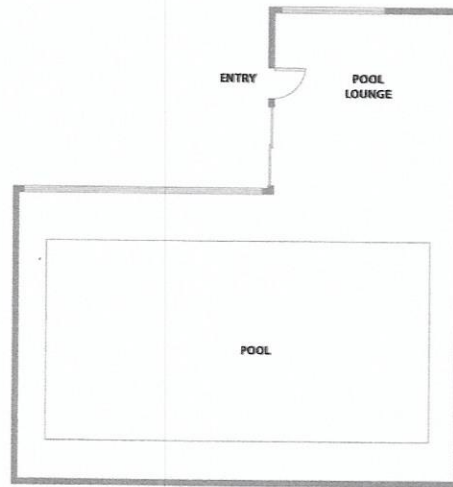
LIVING SPACE		NON-LIVING SPACE	
Square Footage:	4,292 Sq. Ft.*	Square Footage:	739 Sq. Ft.
• Upper Level	776	• Garage	482
• Main Level	1,294	• Storage	133
• Lower Level	631	• Mechanical	124
RESIDENCE TOTAL	2,683		
* Pool House	1,609		

APPROXIMATE TOTAL LIVING & NON-LIVING SPACE
 Square Footage: 4,998 Sq. Ft.*

RENDERING BY OPEN HOMES PHOTOGRAPHY
 ALL MEASUREMENTS AREA APPROXIMATE WHILE DEEMED RELIABLE, NO INFORMATION
 ON THESE FLOOR PLANS SHOULD BE RELIED UPON WITHOUT INDEPENDENT VERIFICATION

170 PALO ALTO AVENUE

SAN FRANCISCO, CALIFORNIA



POOL HOUSE

PROPERTY SQF INFORMATION

LIVING SPACE

• Square Footage:	4,292 Sq. Ft.*
• Upper Level	778
• Main Level	1,284
• Lower Level	621
RESIDENCE TOTAL	2,683
* Pool House	1,609

NON-LIVING SPACE

• Square Footage:	739 Sq. Ft.
• Garage	482
• Storage	133
• Mechanical	124

APPROXIMATE TOTAL LIVING & NON-LIVING SPACE

• Square Footage:	4,998 Sq. Ft.*
-------------------	----------------

RENDERING BY OPEN HOMES PHOTOGRAPHY
ALL MEASUREMENTS AREA APPROXIMATE WHILE DEEMED RELIABLE, NO INFORMATION
ON THESE FLOOR PLANS SHOULD BE RELIED UPON WITHOUT INDEPENDENT VERIFICATION